

Grove Manitowoc National Crane Potain



GMK5220

Grove Mobile Crane Product Line

GMK5220

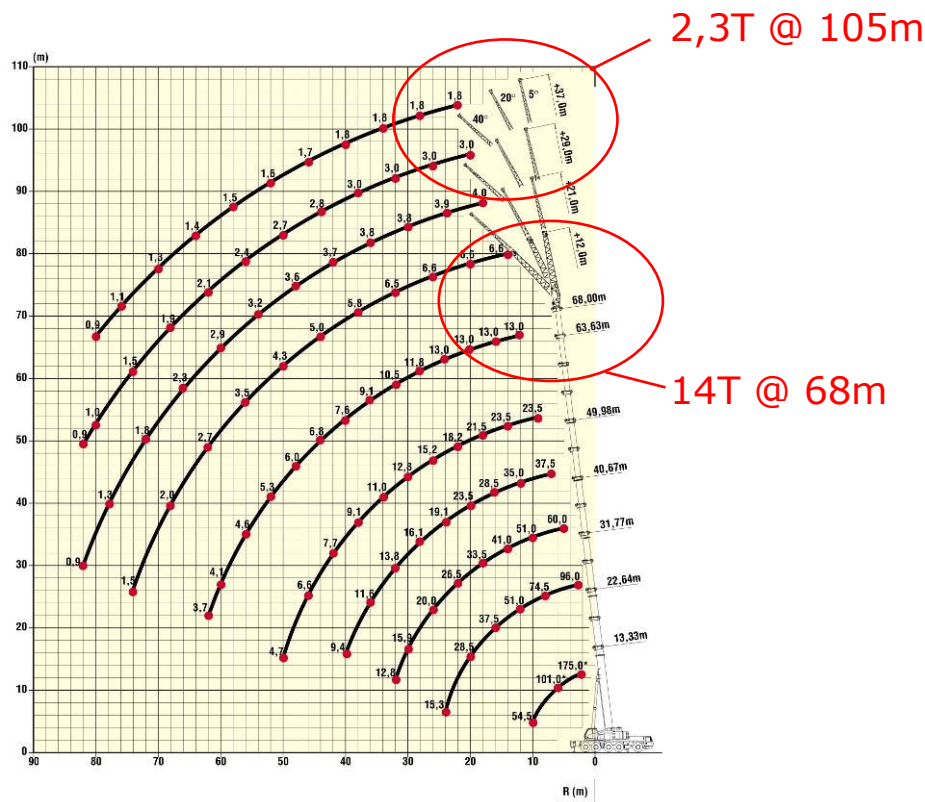


2 GMK 5220

Grove Maniowoc National Crane Potain



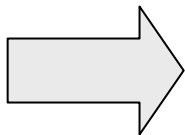
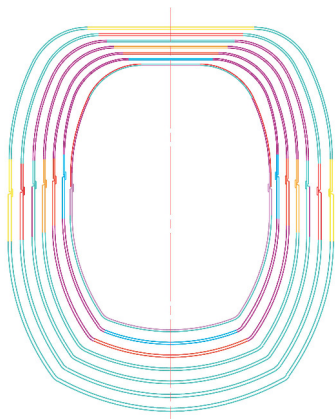
Loadcharts



- ▶ 13,3 - 68 m 7 Section Boom
- ▶ TWIN-LOCK™ Telescoping
- ▶ MEGAFORM™ Boom Profile
- ▶ Max Hook Height 68 m
- ▶ Max Radius 88 m
- ▶ 12,0 - 21,0 m Swingaway
- ▶ 2 x 8,0m Insert for Additional Length
- ▶ Max Hook Height 105 m
- ▶ Hydraulic Offset / Luffing 5° - 40°

Boom

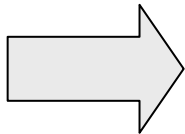
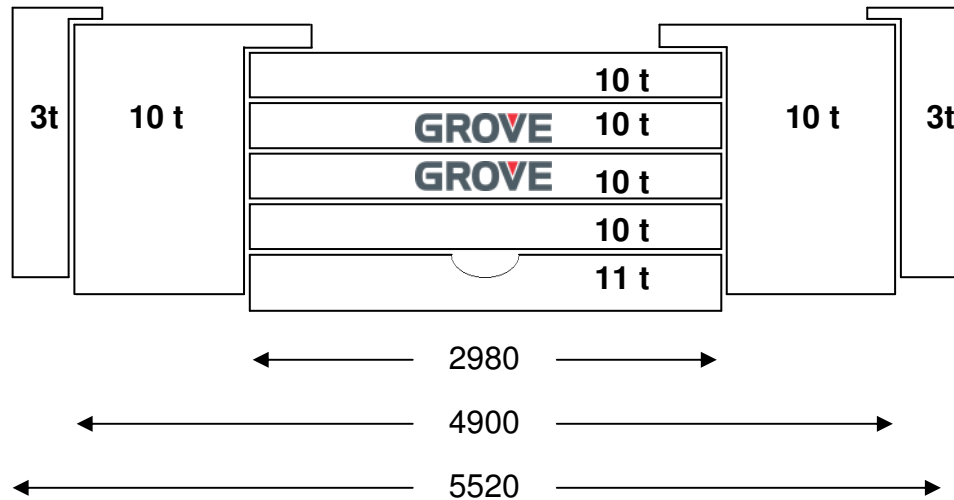
The new shaped 7 section boom (13.3 - 68 m with MEGAFORM) saves weight without loss of capacity.



Very compact crane with high lift capacities

Counterweight

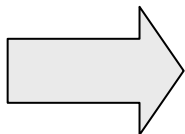
The counterweight gives various possibilities.



Flexibility for different applications & jobsites.

Hydraulic Retarder

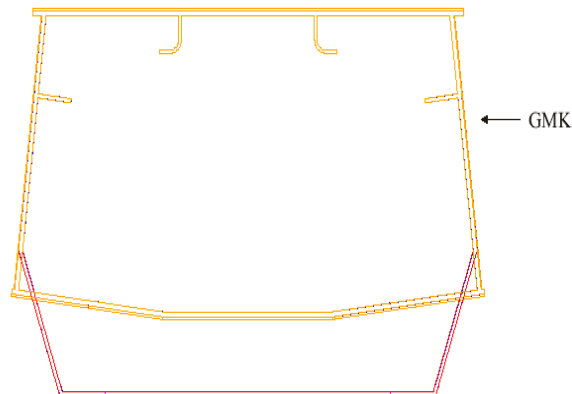
The additional breaking system has changed from a magnetic to an hydraulic system.



Same breaking power but with a more stable breaking characteristic.

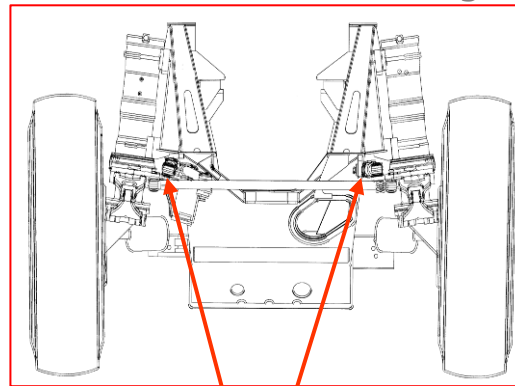
Frame and Steering

The design of the carrier frame has changed due to a change in the steering technique.



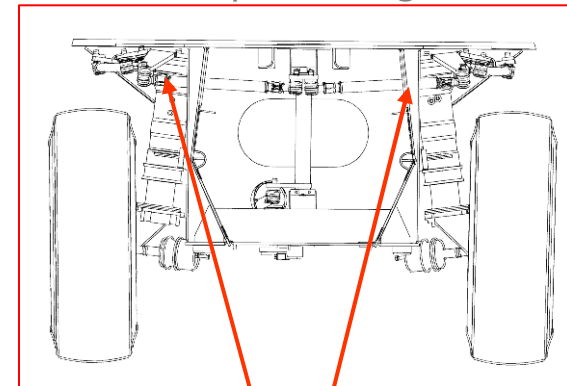
New GMK 5220

Conventional Steering

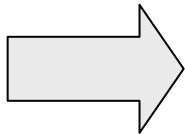


Frame depth is limited by steering link

Top steering

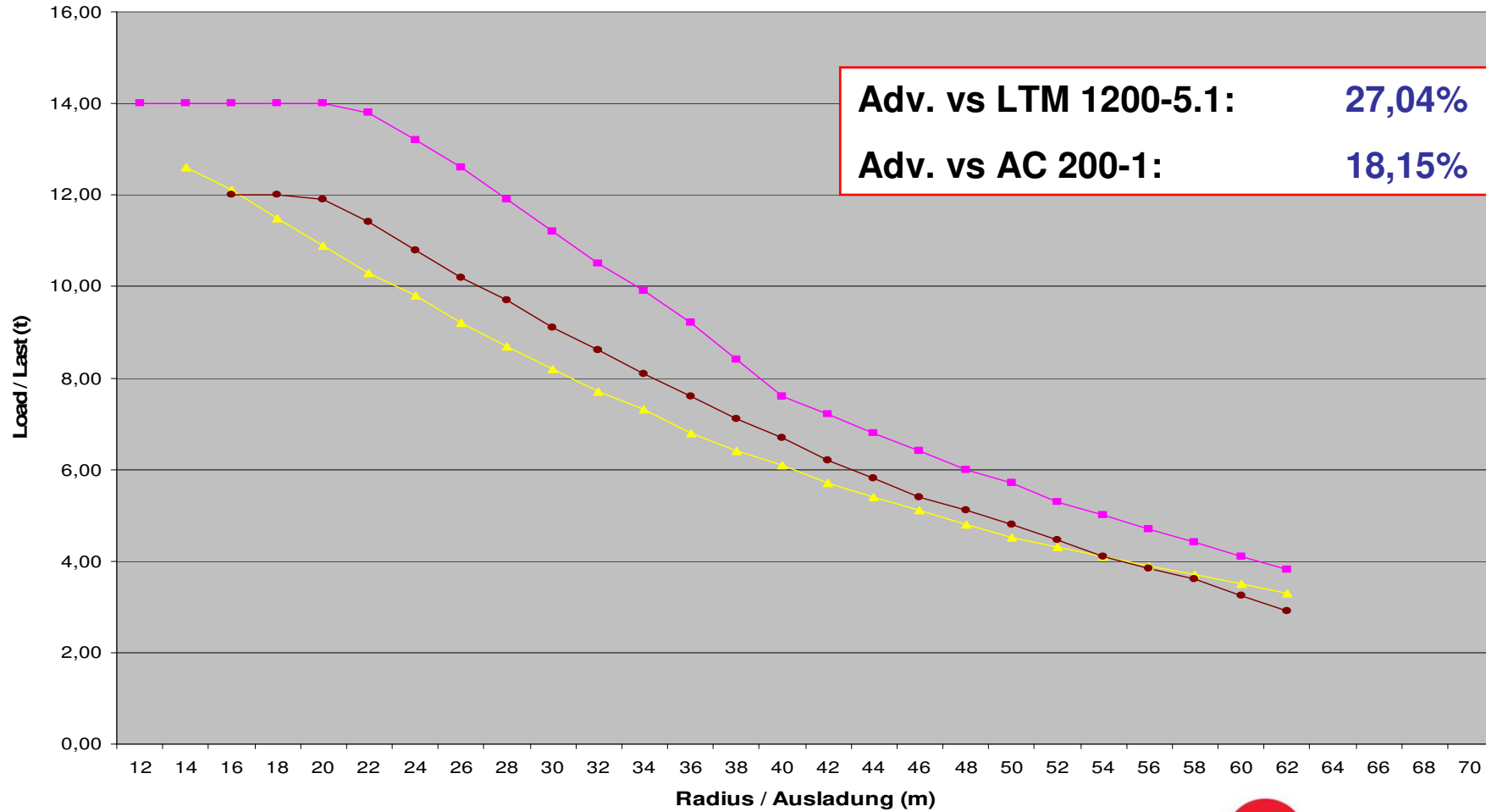


The top steer frame design allows a deeper frame for greater strength



More stability on the road.
More strenght in the chassis

Competitor comparison: Main boom

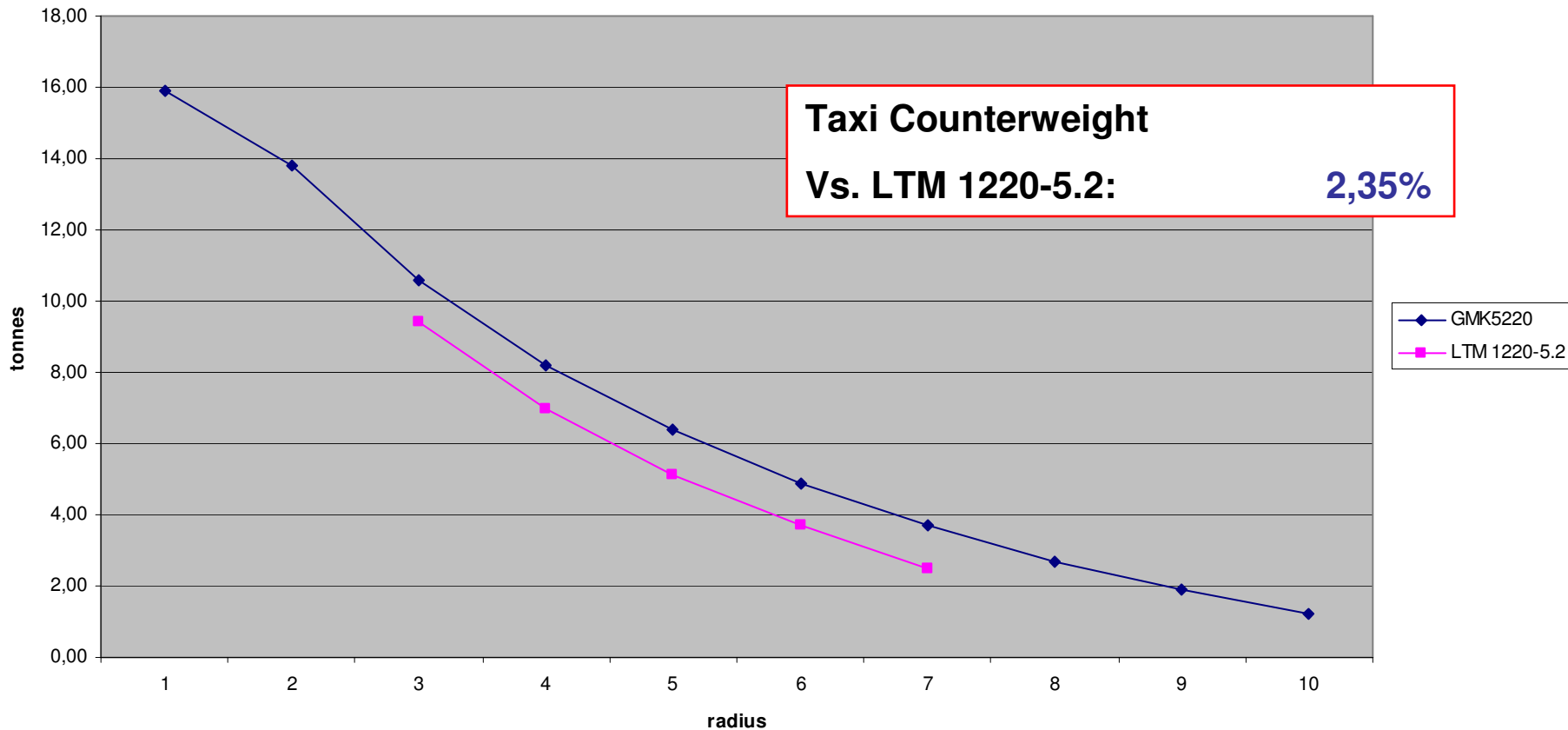


Adv. vs LTM 1200-5.1: **27,04%**
 Adv. vs AC 200-1: **18,15%**



Competitor comparison: Main boom 58,6 m

58,6 m



Technical comparison

	GMK5220	ATF220G-5	LTM1200-5.1	LTM1220-5.2	AC200-1
Nom. Capacity	220 t **	220 t *	200 t *	220 t *	200 t **
Boom Length	68 m	68 m	72 m	60 m	67,8
Capacity @ 68 m boom	14T @ 20 m	13,8T @ 16 m	12,6 @ 14 m	--	12T @ 18m
Loadchart adv. @ 60 m	100%	-9,00%	-18,67%	+ 0,94%	-9,86%
Loadchart adv. @ 68 m	100%	-6,50%	-26,62%	--	-20,20%
Adv. Loadchart (total)	100%	2,00%	-9,75%	+ 3,88%	-9,85%
max. Extension	68 m + 37 m	68 m + 37 m	72 m + 36 m	60 m + 43 m	67 m + 33 m
max. Counterweight	77 t	71 t	72 t	74 t	69 t
Power rating (carrier)	420 kW	390 kW	370 kW	400 kW	380 kW
Power rating (superstr.)	170 kW	138 kW	145 kW	180 kW	170 kW
Transmission	Allison	ZF AS-Tronic	ZF AS-Tronic	ZF AS-Tronic	ZF AS-Tronic
Suspension Control	-130/+170 mm	?	-150 mm	-150 mm	???
Drive	10x8x10	10x8x10	10x8x10	10x8x8	10x8x8

Product specification

- ▶ 7 Section 68 m Boom
- ▶ 12 / 21 hydr. Swingaway + 2 x 8 m extension for 105 m max. length
- ▶ 14 t @ 68 m
- ▶ max. 77 counterweight / 11 t (D), 16 t (UK) technically roadable
- ▶ new boom shape similar to GMK 5130 - 1
- ▶ EKS 5 graphic display (EKS 5 light option)
- ▶ ALLISON transmission (optional integrated hydraulic retarder)
- ▶ Megatrak Suspension with All Wheel Steer as Standard



