



GMK6300

Building on the success of the GMK6250

GROVE®

WORLD 200T - 300T AT MARKET

1998			1999			TOTAL		
Total	Grove	SOM	Total	Grove	SOM	Total	Grove	SOM

Region

Asia/P (Excl Japan)	1	0	0%	2	1	50%	3	1	33%
EAME	30	12	40%	44	12	27%	74	24	32%
Latin America	0	0	-	1	1	100%	1	1	100%
North America	23	12	52%	21	14	67%	44	26	59%
TOTAL	54	24	44%	68	28	41%	122	52	43%

Japan: 21 units 1998, 18 units 1999

Source: ICE



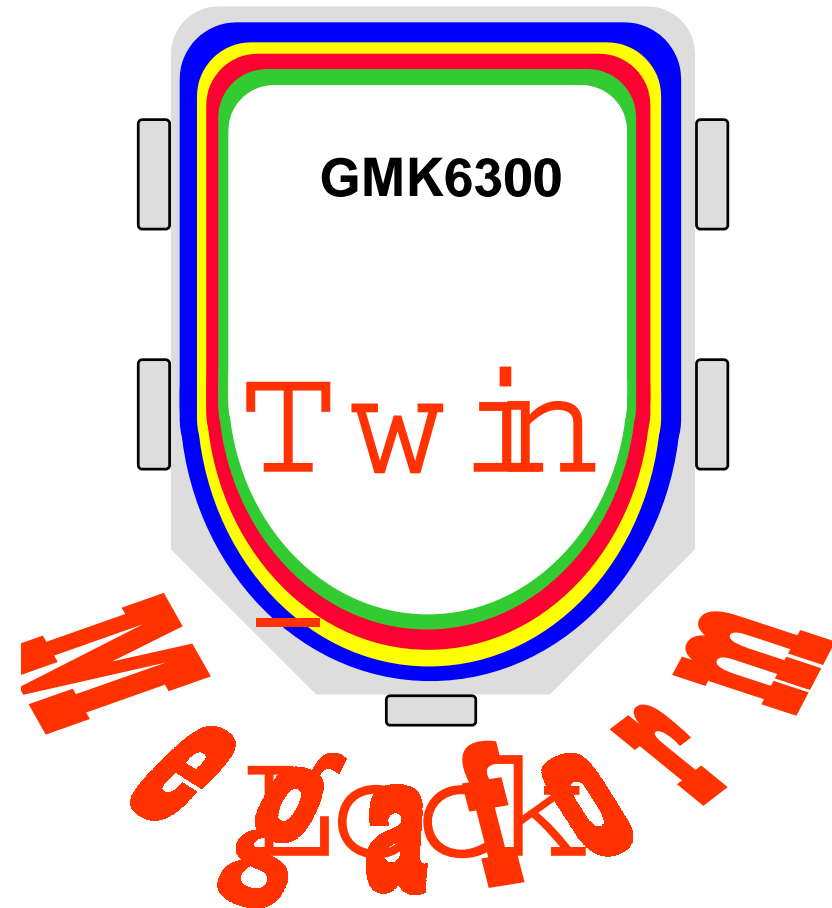
GROVE®

THE **Megaform** ADVANTAGE

- ▶ **Shape Inherently Stronger**
 - Continuous Bottom Shell
 - Complete wear pad coverage
 - Self Aligning - Smoother telescoping
- ▶ **No stiffeners (Inner Sections)**
 - Allows Larger/Stronger Cross Section
 - Reduced Weight
 - Lower Material / Manufacturing Costs

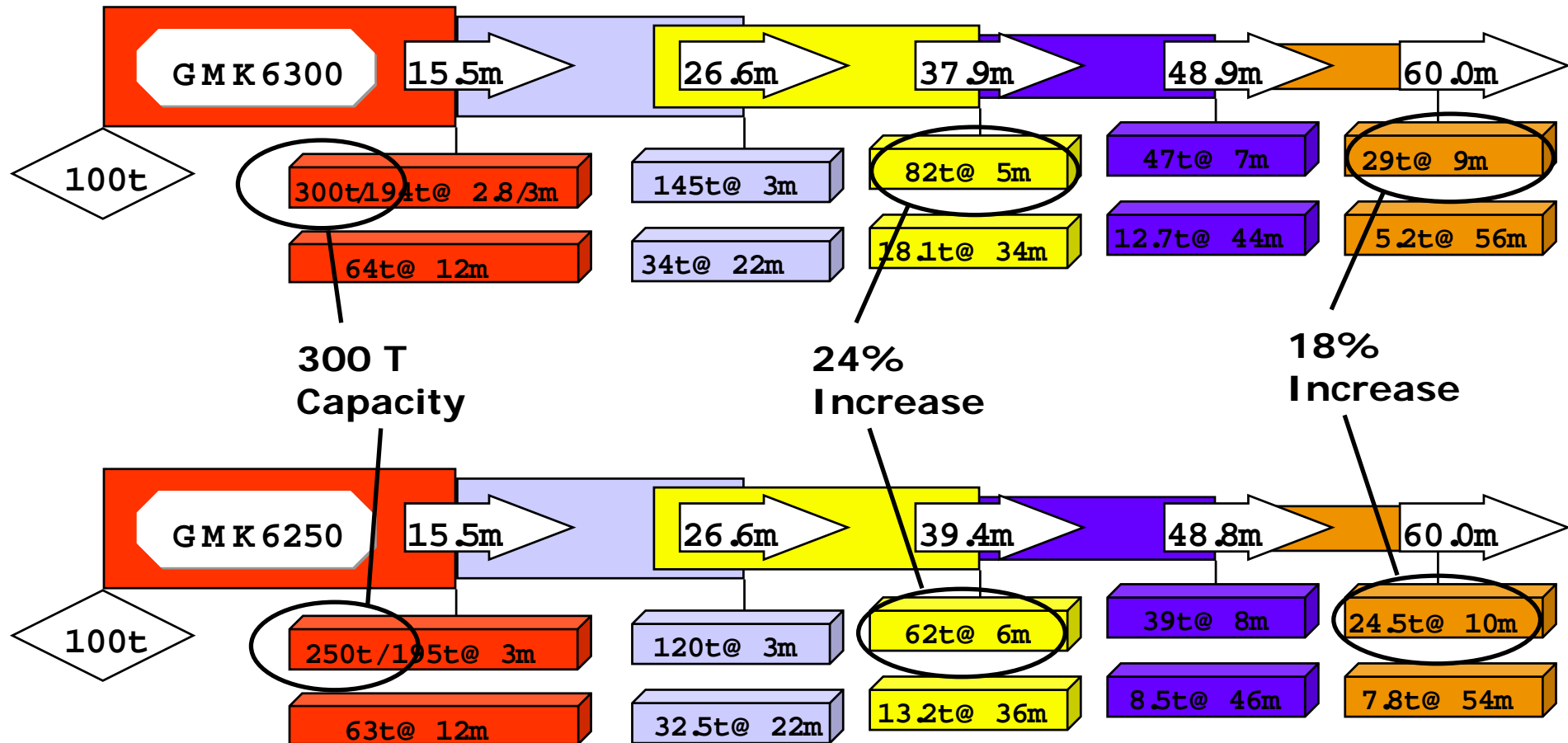
Approx. 10% Structural Improvement
(Same Weight)

LUC



GROVE®

▶ GMK6300 Vs GMK6250



Average Overall Loadchart Improvement -

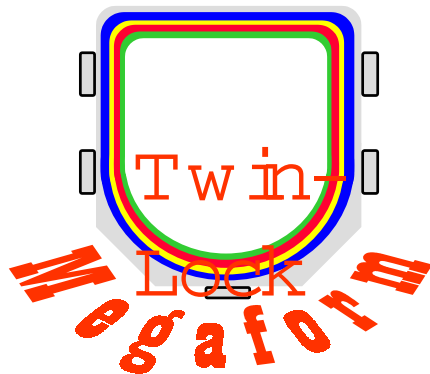
Main Boom: 9.15%

Luffing Jib: >16% (> 30% 48m-54.3m Boom Length)

GROVE®

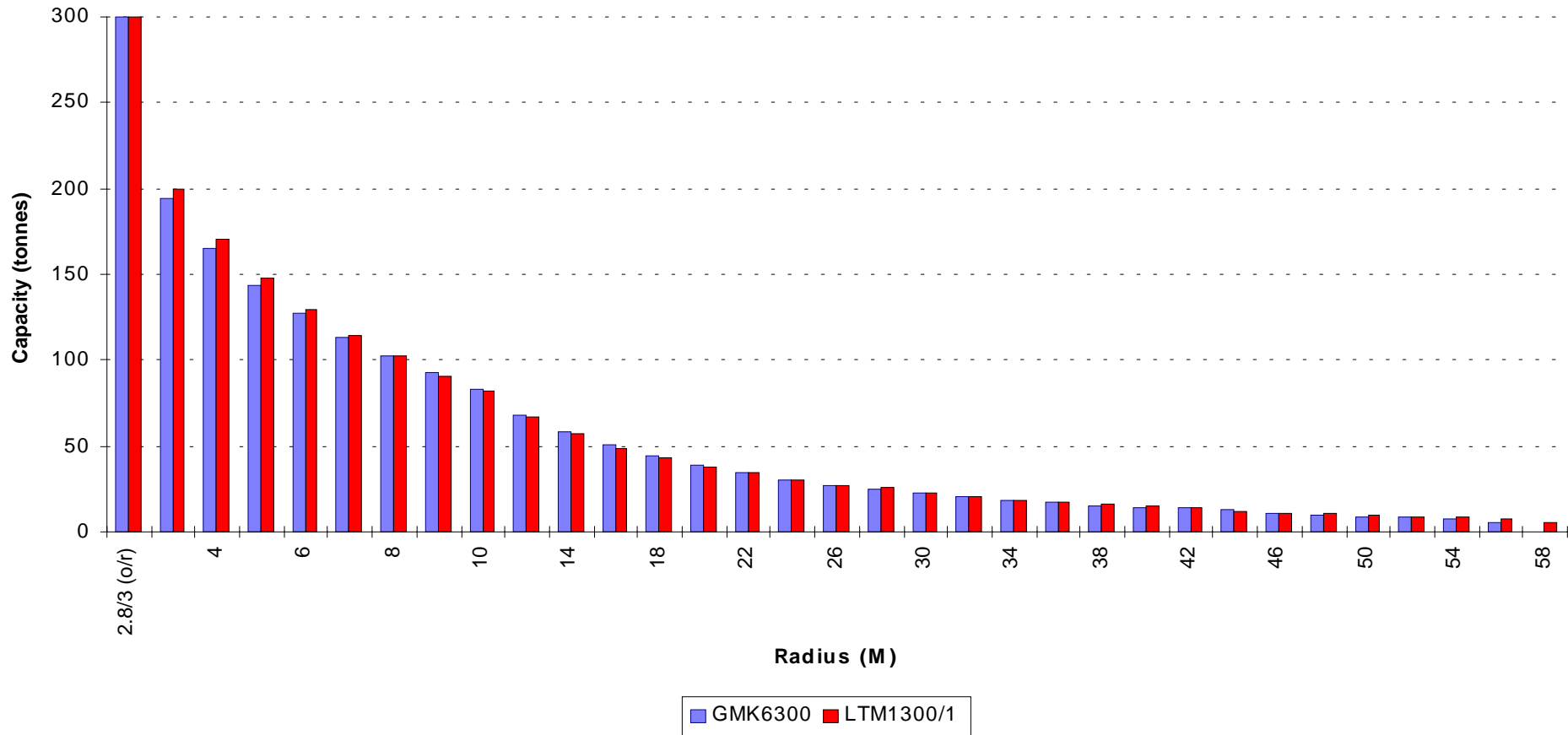
BOOM

- ▶ 60m five section Megaform Twin-Lock
- ▶ ECOS controlled / EKS4 monitored
- ▶ Multiple telescoping configurations for optimum strength & stability
- ▶ Max capacity @ max hook height 29.0T @ 59m (DIN/ISO)
- ▶ Max capacity @ max radius 5.2T @ 56m (DIN/ISO)



GROVE®

Vs LTM1300/1 MAX COUNTERWEIGHT

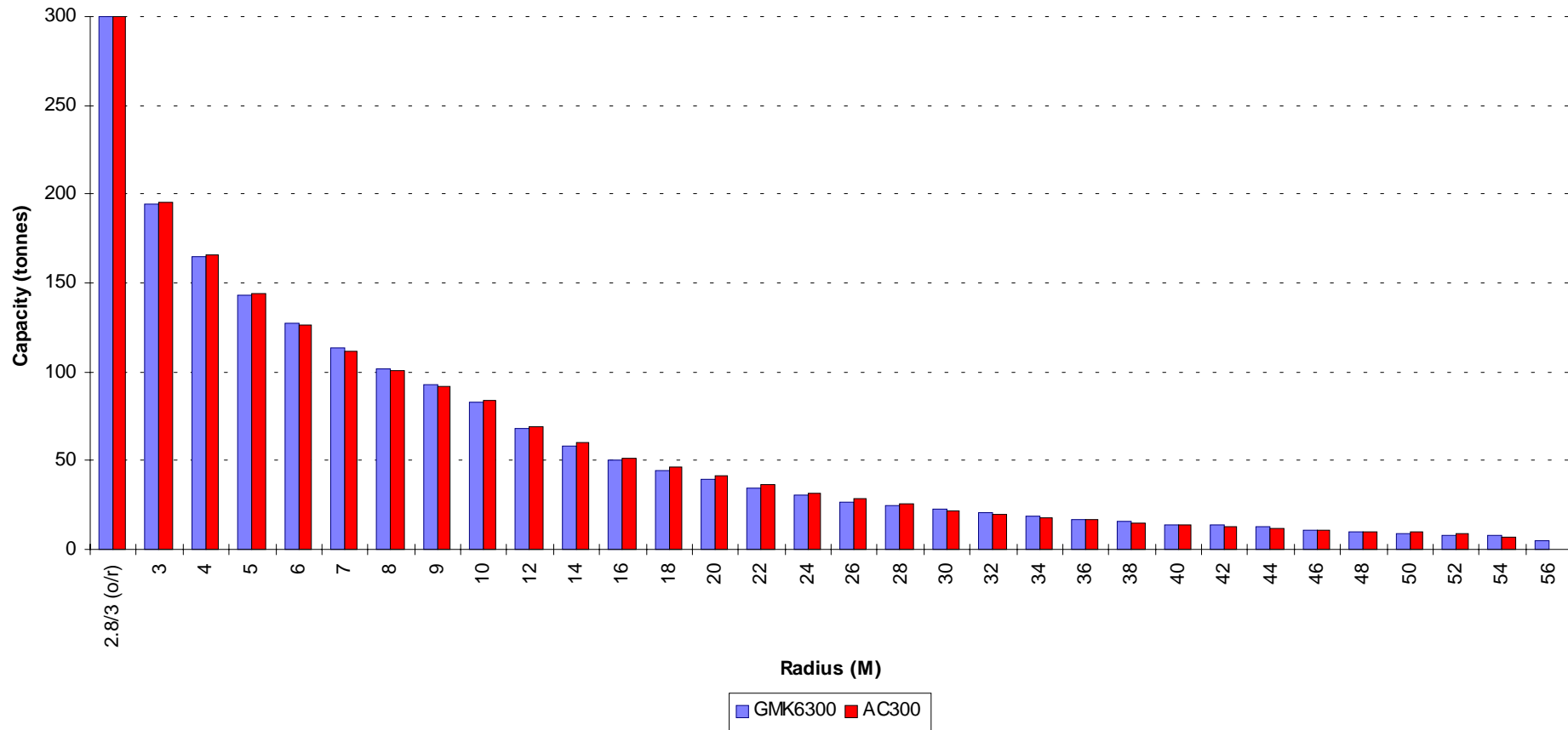


GMK6300 100T Cwt **LTM1300/1** Approx 100T Cwt (inc rigging frame)

Overall capacity comparison **+3.2%**

GROVE®

Vs AC300 MAX COUNTERWEIGHT



GMK6300 100T Counterweight **AC300 100T Counterweight**

Overall capacity comparison +3.3%



LUFFING JIB

- ▶ 21-61m length (8m intermediates)
- ▶ Main Boom Angles 82° / 70°
- ▶ Max capacity @ max hook height 2.8T @ 108m (48.6m Boom + 61m)
- ▶ Max capacity @ max radius 4.1T @ 74m (43m Boom + 61m)
- ▶ Single A-Frame mast reduced weight and reeving (6 lines)

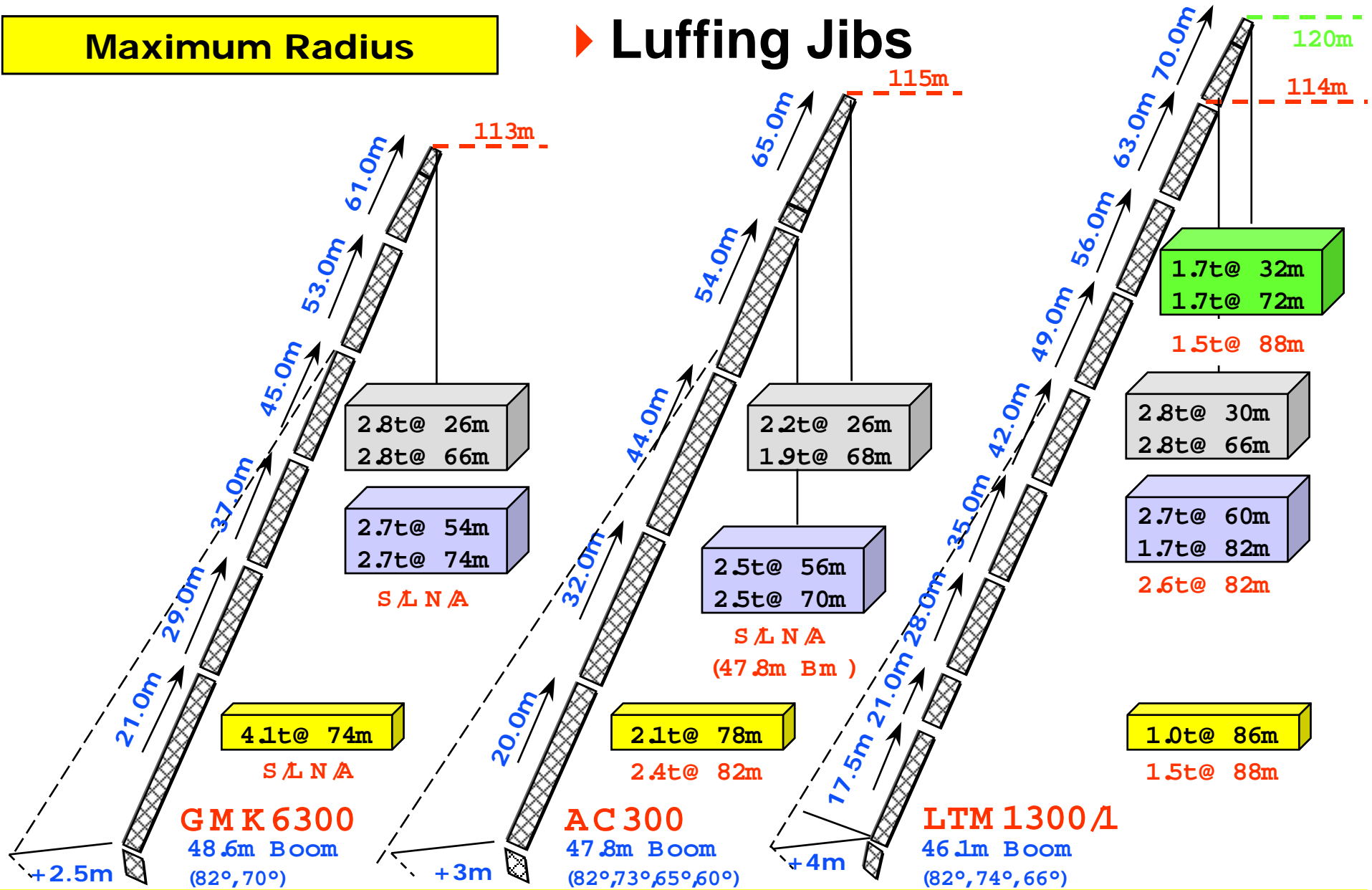


A-Frame Mast



Maximum Radius

Luffing Jibs

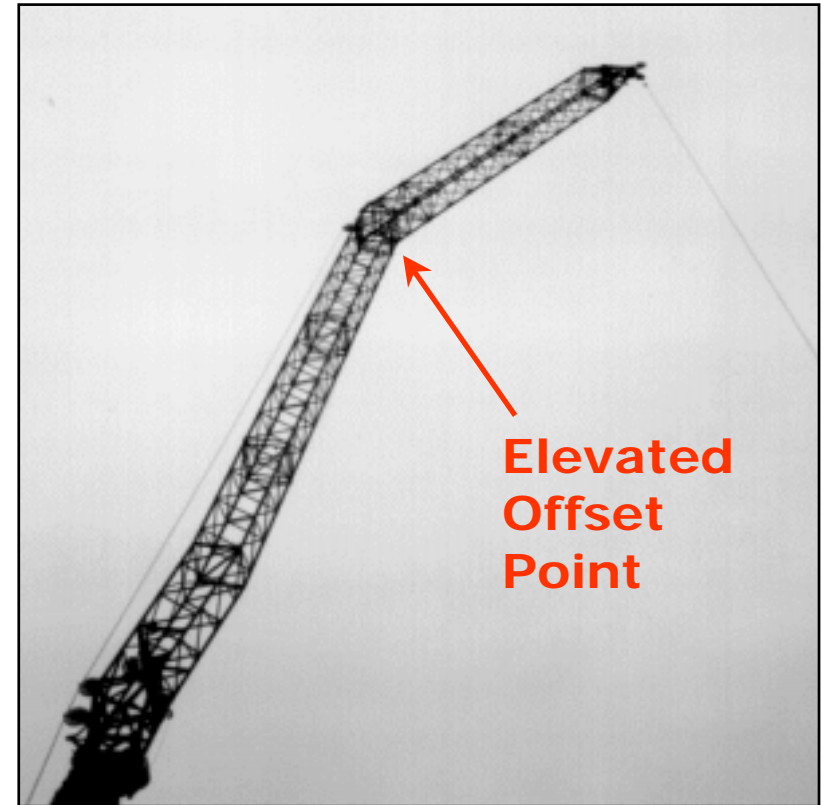


FIXED OFFSETTABLE JIB

- ▶ 19-51m length (8m intermediates)
- ▶ Offsets 3° / 25°
- ▶ Max capacity @ max hook height
3.8T @ 108m (60m + 51m DIN/ISO)
- ▶ Max capacity @ max radius
1.4T @ 84m (48.6m + 51m DIN/ISO)
- ▶ Uses luffing jib components
(plus offset adapter)

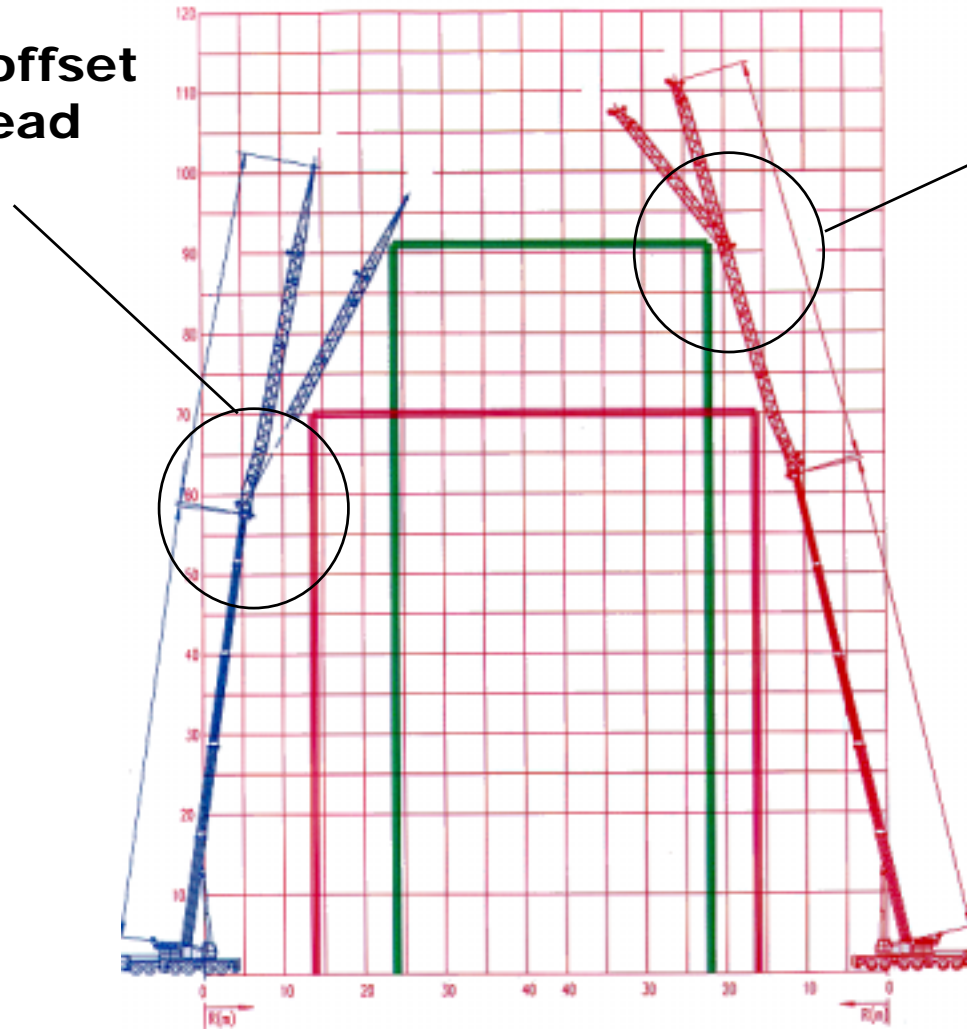


**Offset
Adapter
(3° , 25°)**



FIXED OFFSETTABLE JIB

Conventional offset
@ boom head

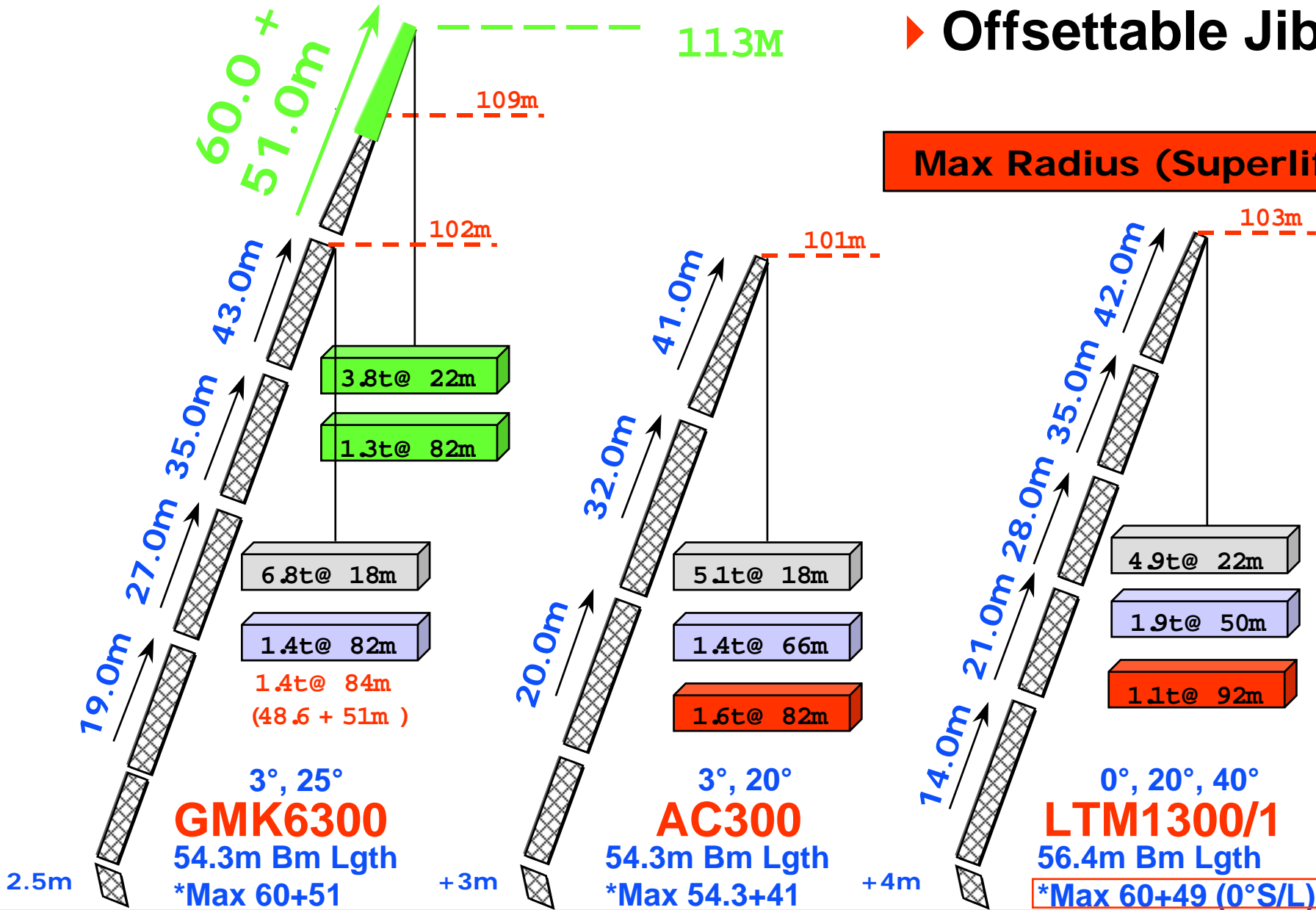


GMK6300
offset @ boom head or
in elevated position
(Extended Reach)

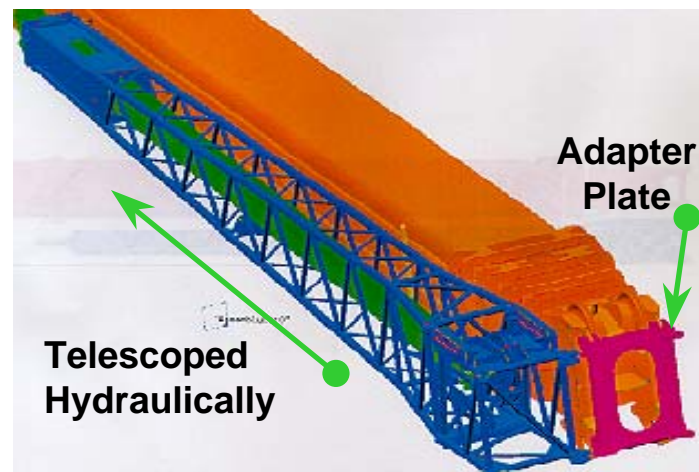
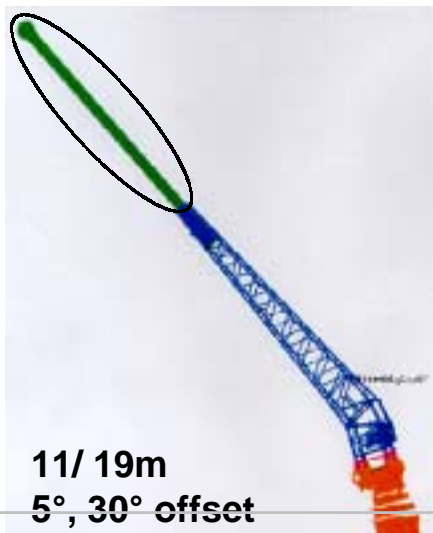
GROVE®

▶ Offsettable Jibs

Max Radius (Superlift)



SWINGAWAY



	GMK6300	AC300	LTM1300/1
Max Main Boom	60m	59m	60m
Swingaway Stage 1	11m	10.7m	12.1m
Swingaway Stage 2	19m	21.7m	21m
Max Combined Length	79m	80.7m	81m
Max Overweight Road Counterweight	8t	11t	12.5t
Capacity @ min radius Stage 1	15t @11m	13.7t @14m	
Capacity @ max radius Stage 1	2.0t @ 26m	1.6t @ 28m	
Capacity @ min radius Stage 2	7.6t @13m	10.2t @16m	
Capacity @ max radius Stage 3	1.8t @ 32m	2.0t @ 30m	
Offsets	5° & 30°	0° & 20°	0°,20° & 40°

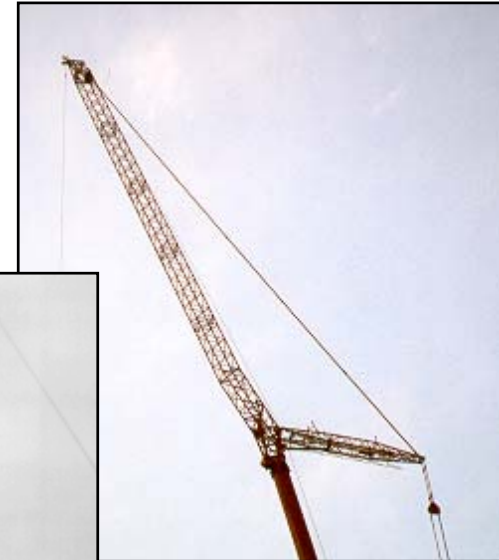
GROVE®

BOOM & JIBS

- ▶ 60m five section Megaform Twin-Lock Boom
- ▶ 29.0T @ 59m height (DIN/ISO)
- ▶ 5.2T @ 56m radius (DIN/ISO)

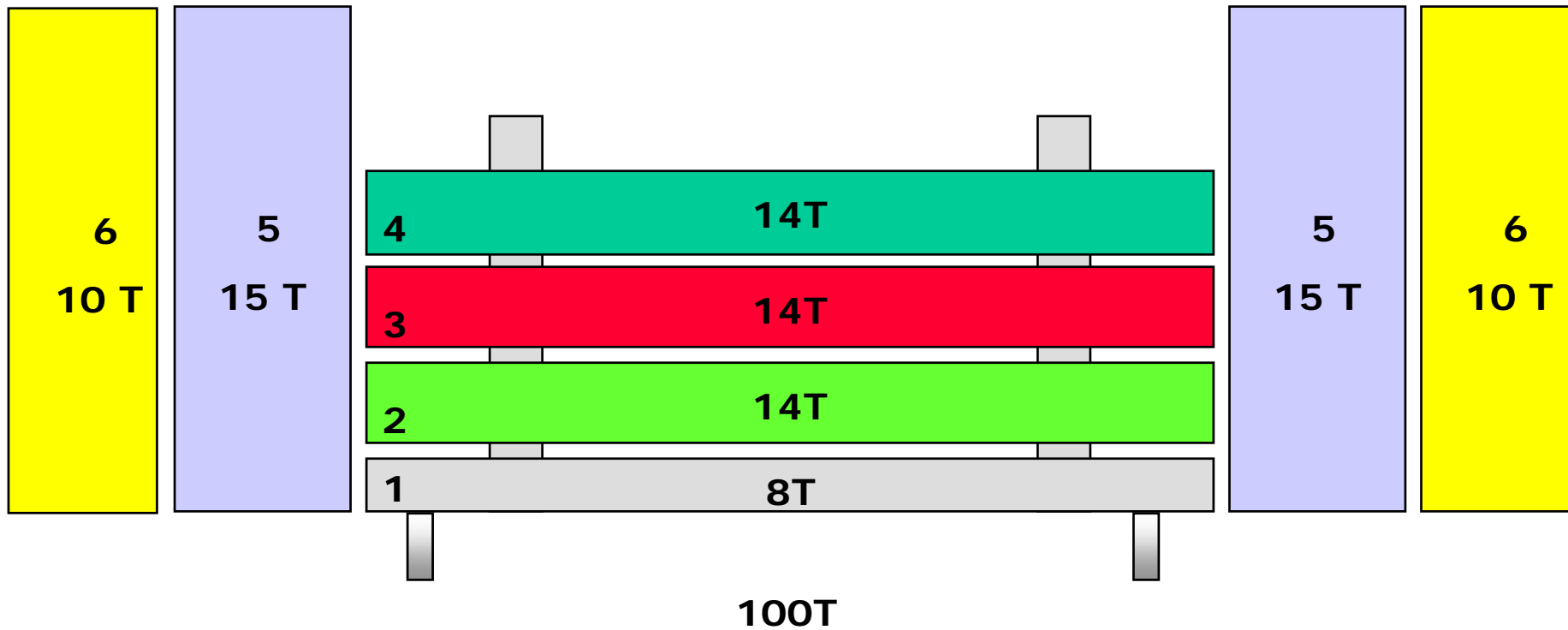
- ▶ 21-61m luffing jib
- ▶ 2.8T @ 108m height
- ▶ 4.1T @ 74m radius

- ▶ 19-51m offsettable jib (3°, 25°)
- ▶ 3.8T @ 108m height (DIN/ISO)
- ▶ 1.4T @ 84m radius (DIN/ISO)



GROVE®

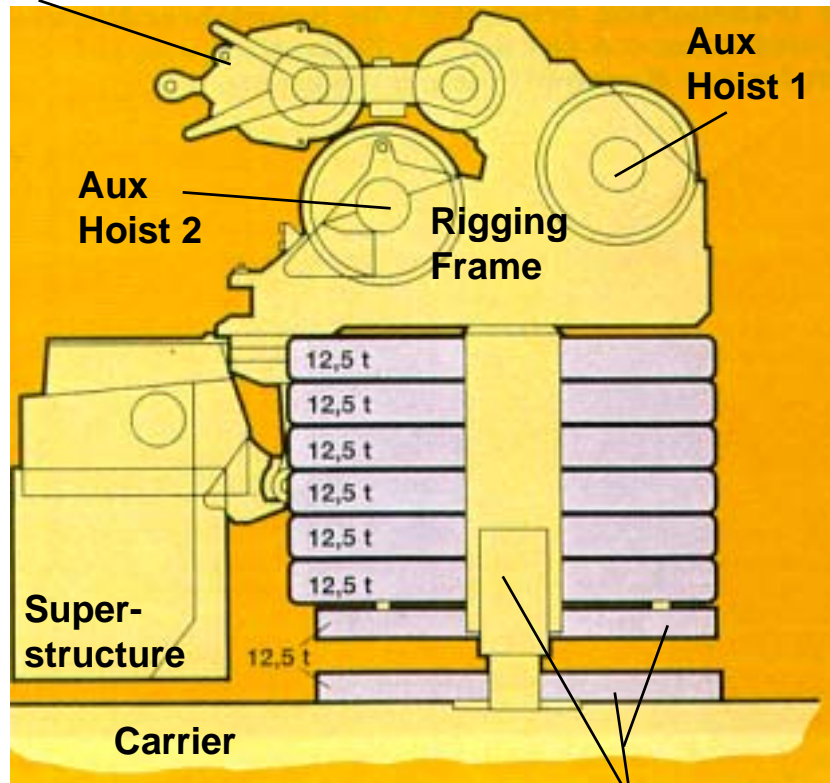
▶ Counterweight



GROVE®

Rigging Frame must always be removed for highway travel

Luffing Jib attachments



Base plate & rigging cylinders

► **Counterweights**
Liebherr LTM1300/1

Counterweight Build Up

12.5T Base Plate (2 Piece)

6 x 12.5T Slabs

Total 87.5T Slabs Plus:

Rigging Frame & cylinders
(minimum 12.35T without aux hoists)
(maximum 16.25T with 2 Aux hoists)

TOTAL 99.85T / 103.75T

Plus:

2 x 12.5T (required for Superlift)



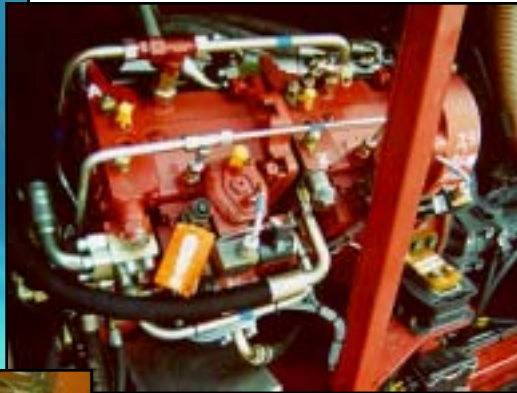
5.5m
Vehicle
Height

4.5m

GROVE®

SUPERSTRUCTURE POWER

**MB OM906LA 190kW
Fuel tank capacity 330 l**



**3 x axial piston
variable displacement pumps with
electronic power limiting control
Hoist, Boom Lift, Telescope**

**3 axial piston fixed displacement
motors driven by axial piston
variable displacement pump for
Slew**

**Thermostatically controlled oil
cooler. 1220 l hydraulic tank**

GROVE®

ECOS

(Electronic Crane Operating System)



Wind Speed Indicator &
Electronic Level

EKS4

Load Moment
Indicator

TWIN-LOCK
Instrumentation

▶ **Superstructure Cab**

Electronic Pilot Controls
Integrated with **ECOS**, **EKS4** & Engine
Management using **CAN BUS**

GROVE®

CARRIER SPECIFICATION



Engine
Mercedes Benz



Allison Transmission



CLT755, Automatic
5 fwd / 1 rev
2 speed transfer case
Max speed 71kph
Max gradeability 50%

Axle lines
1. drive / steer
2. steer
3. steer
4. drive / steer
5. drive / steer
6. steer

Tyres - 14.00 R25

Optional
12x8x12 drive (axle 2 off road)
16.00R25/20.5R25 tyres

OM502LA
420kW @1800rpm
2700Nm @ 1080 rpm
Fuel tank 330 l

GROVE®

▶ Carrier Cab

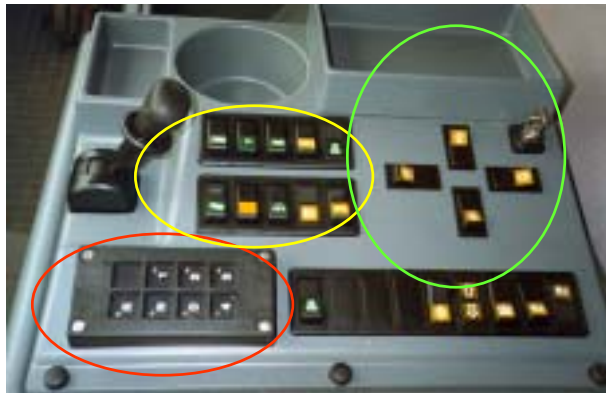


Driving Controls



Standard 2 seat interior

**Transmission Range, Auto,
diff locks etc...**



**Transmission
control pad**

Megatrak suspension controls



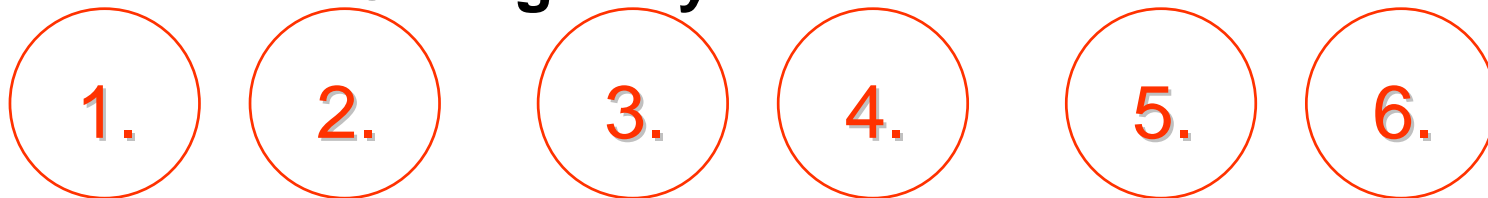
**Optional 3rd seat
(optional bunk
available)**

▶ Steering

On highway axles 1,2,3,5 & 6 steer



Off highway **ALL** axles steer



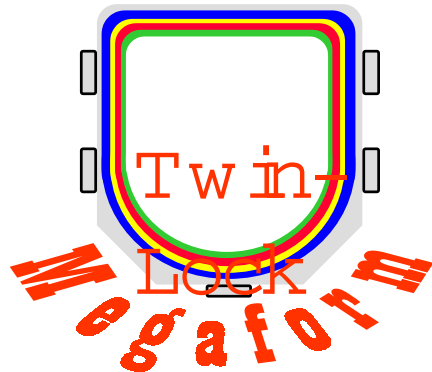
Unique Grove All Wheel Steer

- ▶ Independent rear steer (axles 4,5 & 6) - Improved manoeuvrability
- ▶ No Lifting Axles - Optimum weight distribution on site
- ▶ Electronic/Hydraulic steering angle correction - Reduced tyre wear
- ▶ Turning radius - 14.41m (13.05m All Wheel Steer)
Demag 14.05m, Liebherr 14.45m

GROVE®

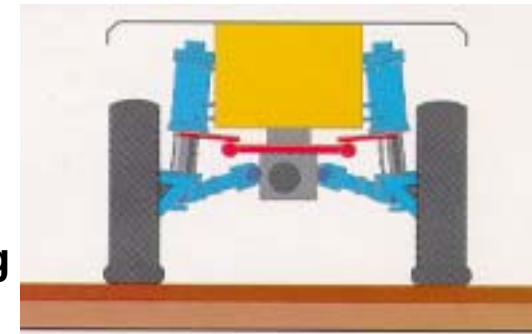
SOME OF THE MAIN FEATURES

- ▶ Megaform Twin-Lock Boom
- ▶ ECOS & EKS 4
- ▶ Aluminium cabs
- ▶ Super cab hydraulically tiltable (20°)
- ▶ Optional 3rd seat and over night bunk
- ▶ All wheel steer
- ▶ All supported on GMK MEGATRAK



MEGATRAK

The most advanced
Suspension and Steering
system in the Industry



GROVE®

► Competition LTM1300/1



Chassis Cab
Featuring
CAN-BUS
controls



Liebherr Engines

12 x 8 x **10**

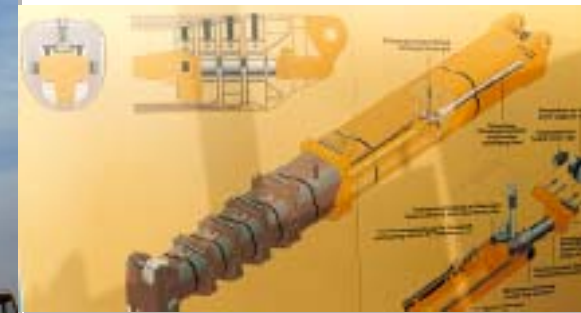
Allison CLBT755
Transmission



Super cab swings over
the rear for road travel
(Tiltable 20°)



Twin lift cylinders,
'Telematik' telescoping



GROVE®

► Competition AC300



Unimec 'Ovaloid'



Section pin locations



Two man carrier cab

Mercedes Engines
12 x 8 x 8
Allison CLBT755
Transmission
(Recent Update)



20° tiltable
superstructure cab

GROVE®

	GMK6300	LTM1300/1	AC300
Max Capacity	300T	300T	300T
Boom	15.5 - 60m (5 Section)	15 - 60m (5 Section)	14.7 - 59m (5 section)
Swingaway	11 - 19m (Hydraulic) (5°, 30°)	12.1 - 21m (0°, 20°, 40°)	10.7 + 10m (0°, 20°)
Boom Extensions	19 - 51m (3°, 25°) (Uses Luff Jib sects.)	10.5 - 42m (0°, 20°, 40°) (40° Only < 35m Jib)	20 - 41m (3°, 20°) (Uses Luff Jib sects.)
Luffing Jib	21 - 61m + 2.5m (8m Sections)	17.5 - 70m + 4m (7m Sections)	20 - 65m + 3m (10 / 12m Sections)
Cab	Tilting	Tilting	Tilting
Engine	OM906LA (190 kW) Euro II / Euromot	D924TI-E (180 kW) Euro II / Euromot	OM366LA (171 kW) Euro II / Euromot
Drive / Steer	12 x 6 x 12 (12 x 8 x 12)	12 x 6 x 10 (12 x 8 x 10)	12 x 6 x 8 (12 x 8 x 8)
Engine	OM502LA (420 kW) Euro II / Euromot	D9408TI-E (440 kW) Euro II / Euromot	OM502LA (420 kW) Euro II / Euromot
Transmission	Allison CLT755 (5 fwd / 1 rev)	Allison CLBT755 (5 fwd / 1 rev)	Allison CLBT755 (5 fwd / 1 rev)
Overall Length	18.05m	19.07m	17.34m
Carrier length	15.06m	15.99m	14.66m
Turning Radius	13.05m	14.45m	14.05m

GROVE®