

220 Ton / 68 Metre



GROVE | GMK5220



220 t



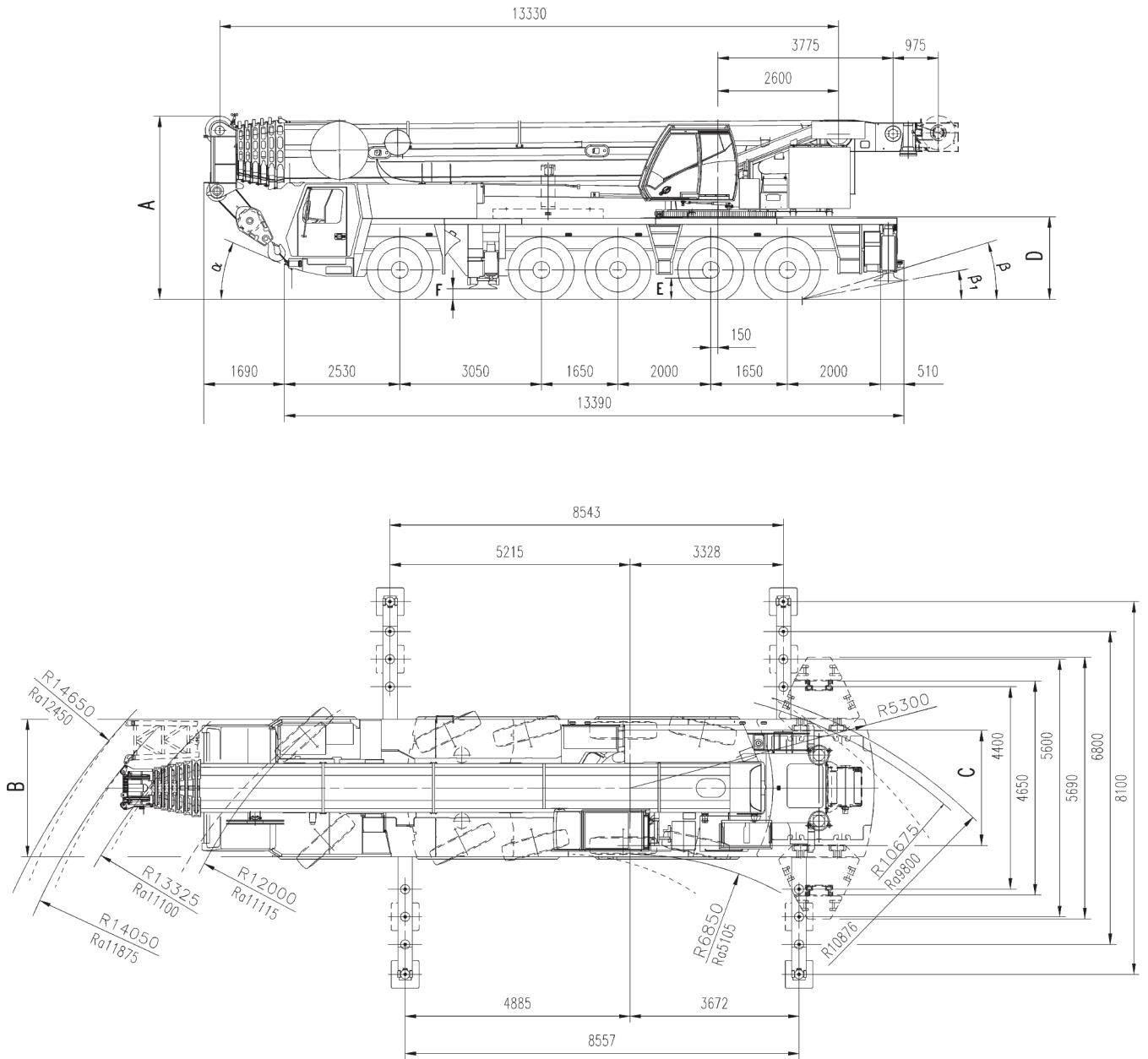
68 m



12-37 m



108 m



**Radius all wheels steered

☉	A		B	C	D	E	F			
	A	130 mm**								
14.00R25	3950	3820	2990	2570	1780	400	228	23	15	10
16.00R25	4000	3870	3000	2510	1830	450	258	25	17	12
20.5R25	4000	3870	3000	2530	1830	450	258	25	17	12

**Lowered

GROVE | GMK5220



68 m



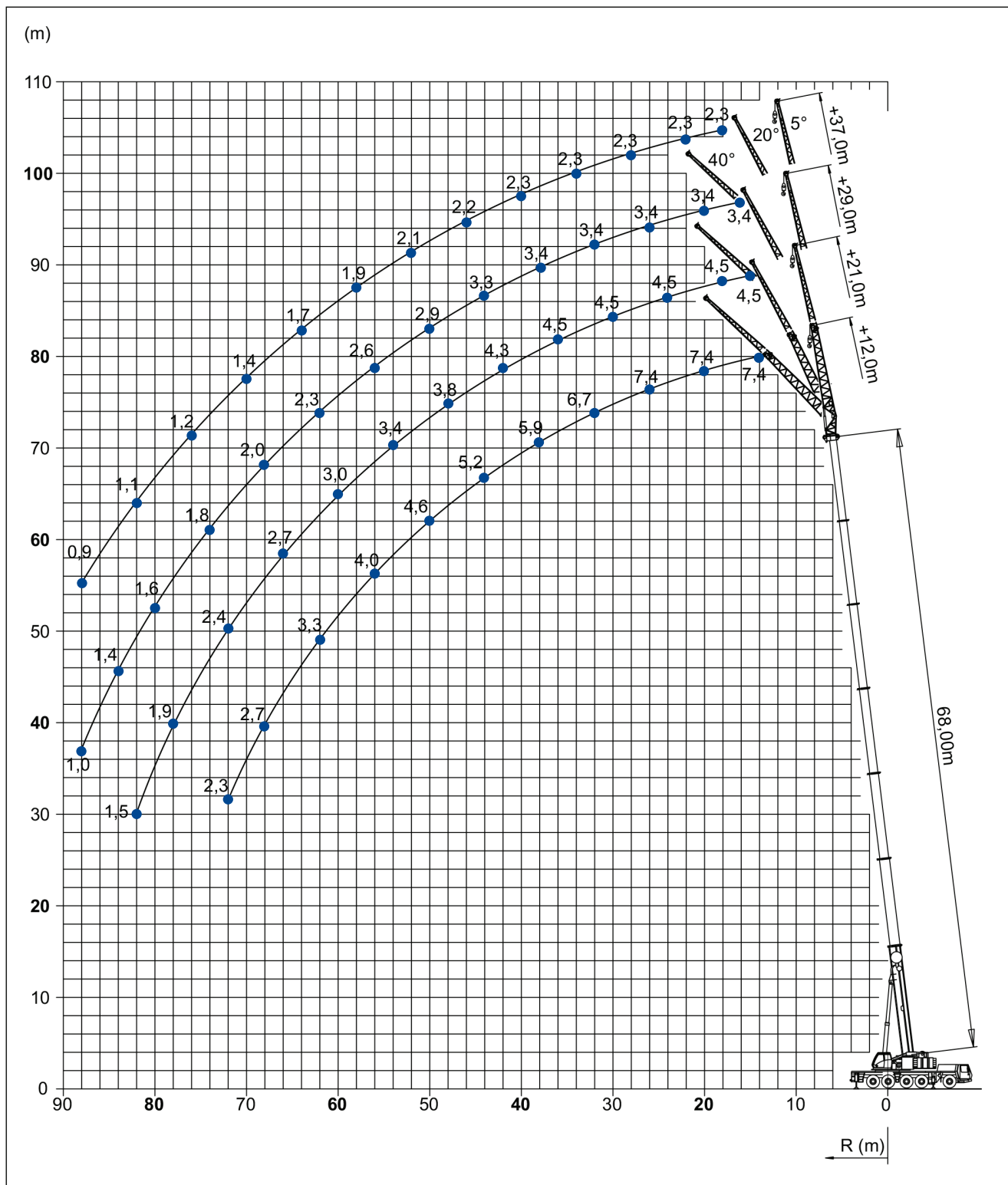
5°-40°-12,-21,0-29,0-37,0 m



8,1 m



360°





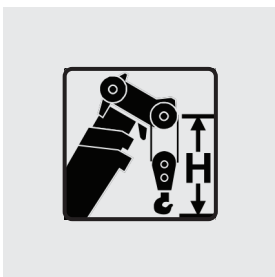
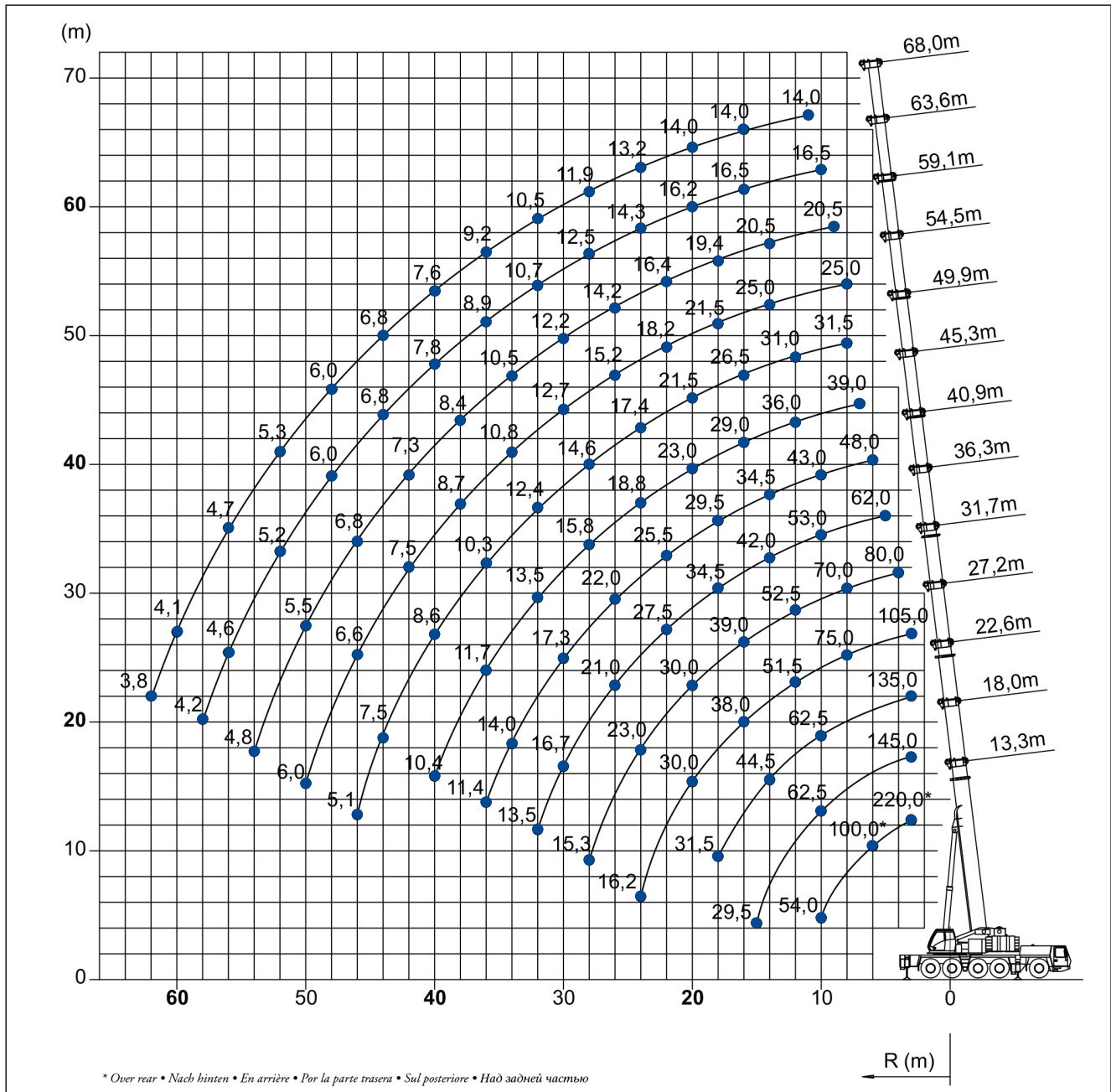
18,3-68,0 m



8,1 m



360°



Hook block	H (mm)
200 D	3650
160 D	3650
125 D	3300
80 D	3300
32 E	3200
12 H/B	2450

* Over rear