

300 Ton / 60 Metre



GROVE | GMK6300



300 t



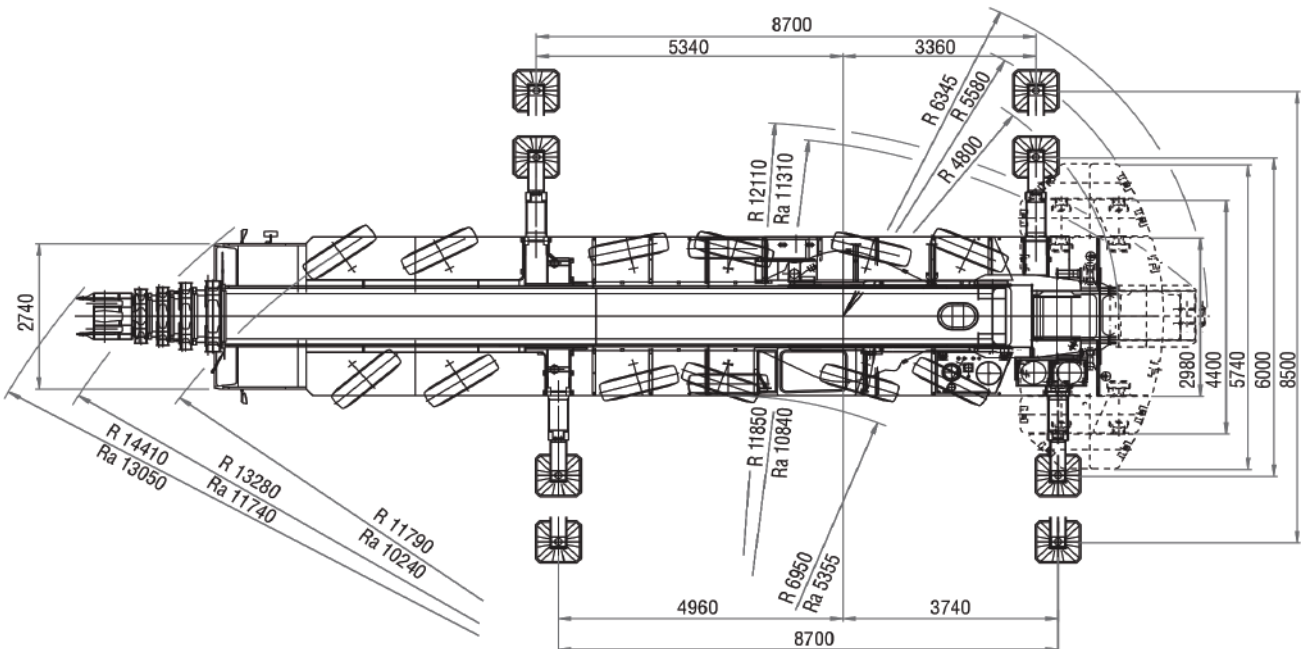
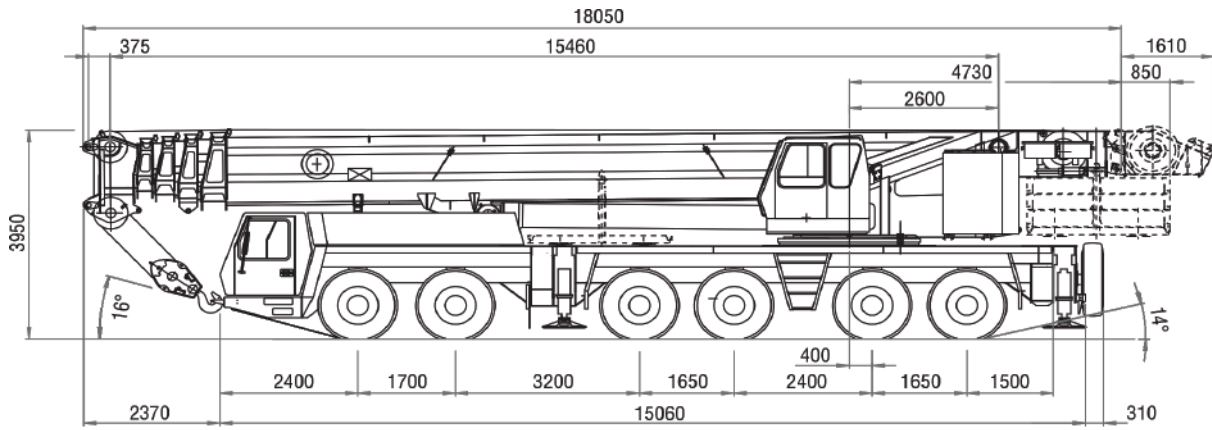
60 m



11-61 m



113 m



GROVE | GMK6300



82° / 37,4-54,3 m



21-61 m



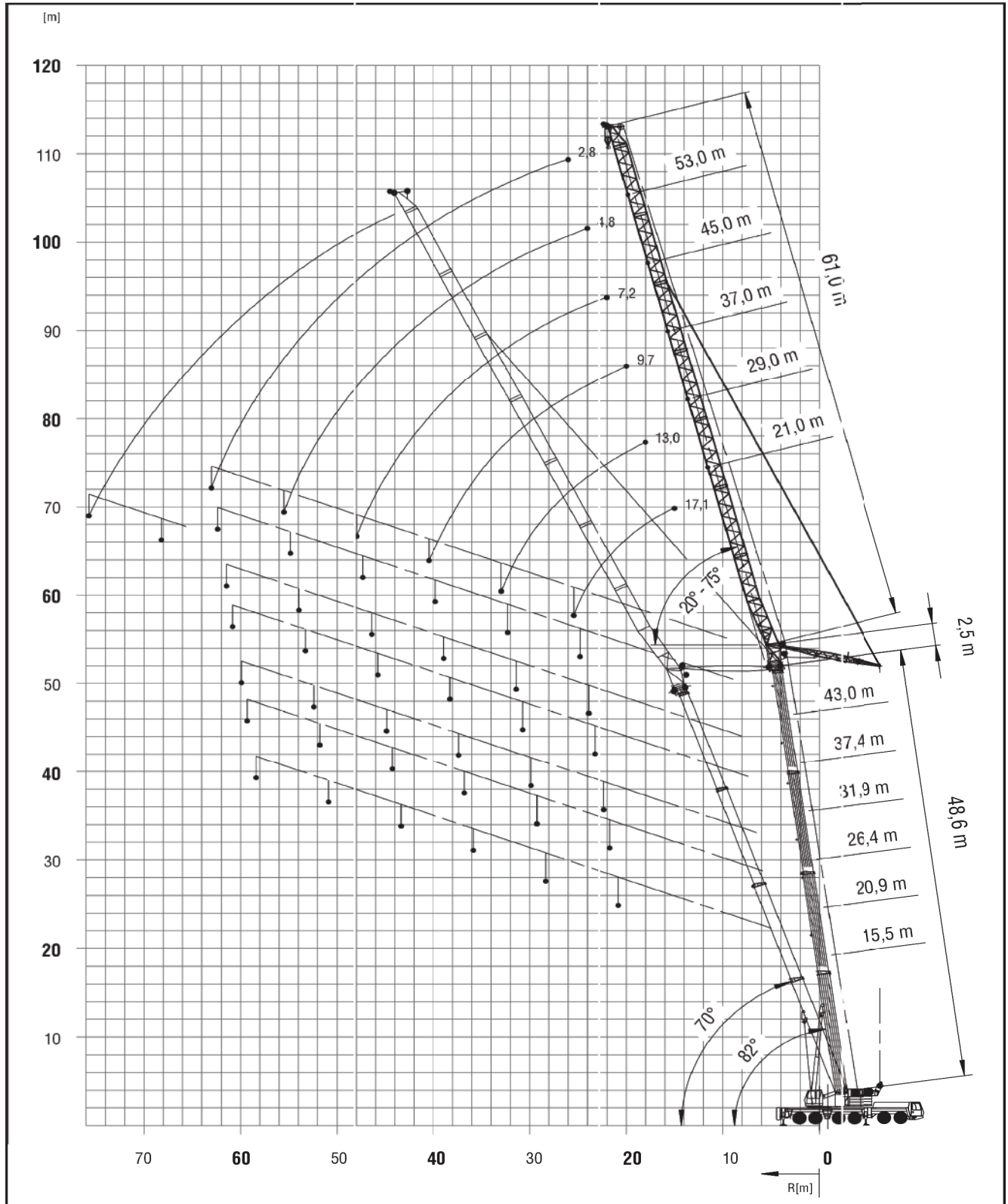
8,5 m



360°



100 t





15,5-60,0 m



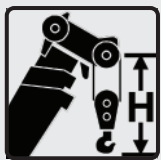
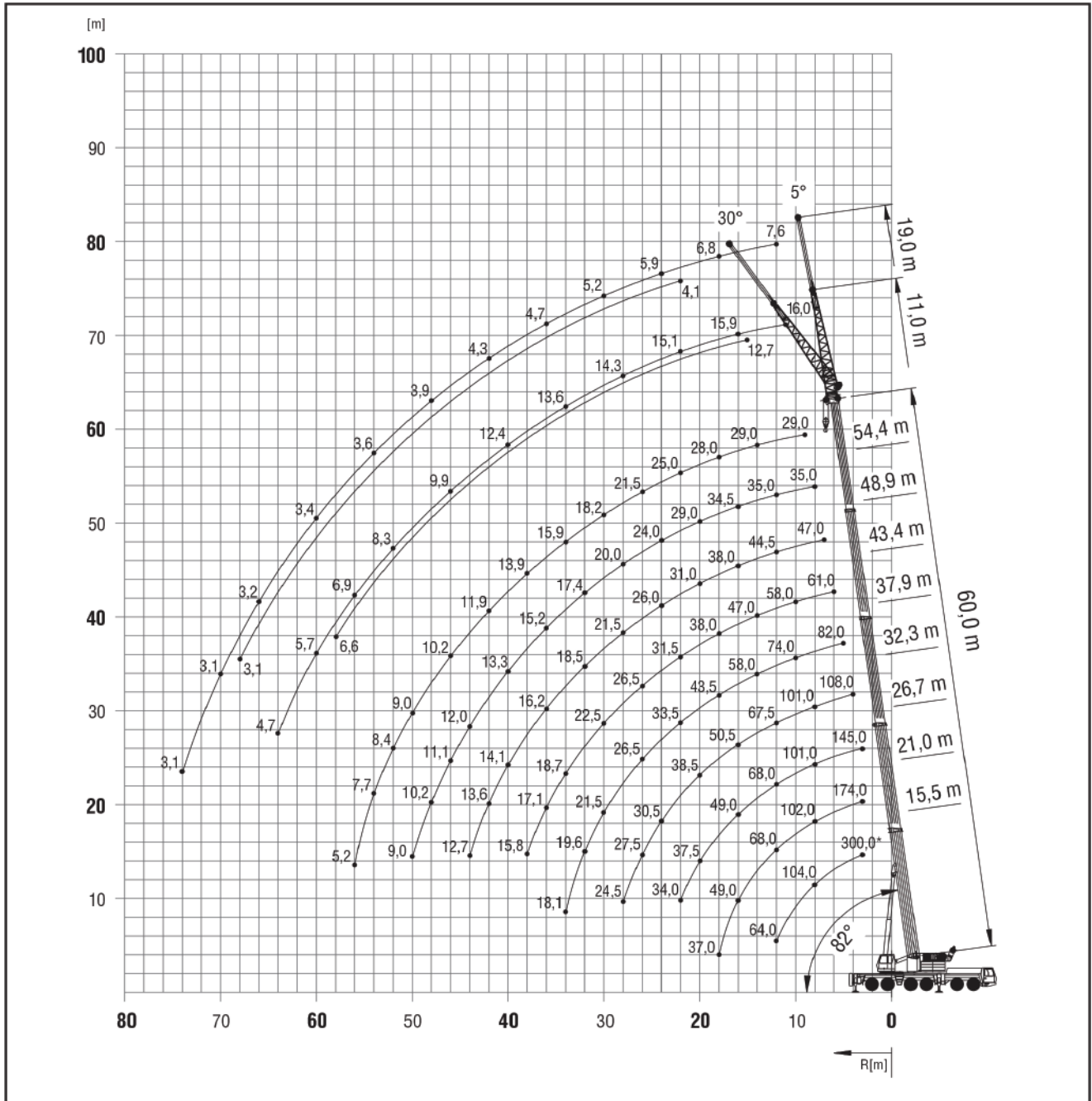
11/19 m



8,5 m



360°



Hook block	H (mm)
200 D	3650
160 D	3650
125 D	3300
80 D	3300
35 E	3200
12 H/B	2450

* Over rear