

300 Ton / 80 Metre

GROVE | GMK**6300L**

300 t



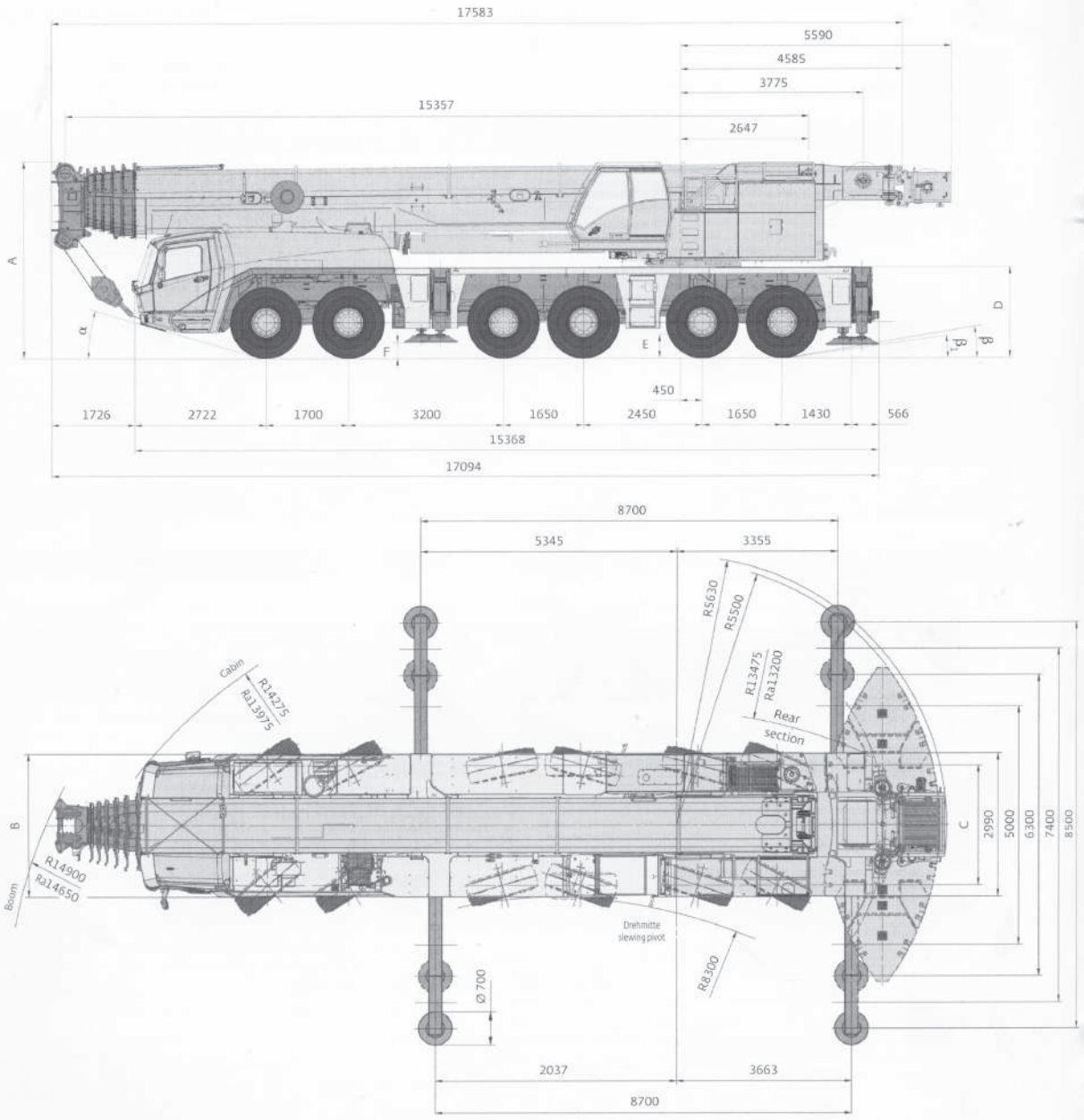
80 m



12-37 m



120 m



**Radius all wheels steered

	A	A	B	C	D	E	F			
	A	130 mm**	B	C	D	E	F			
385/95 R25	3950	3950	2970	2570	1822	400	297	14	8	6
445/95 R25	4000	4000	2975	2510	1872	450	327	16	10	8
525/80 R25	4000	4000	3070	2530	1872	450	327	16	10	8

**Lowered

GROVE | GMK6300L



80,0 m



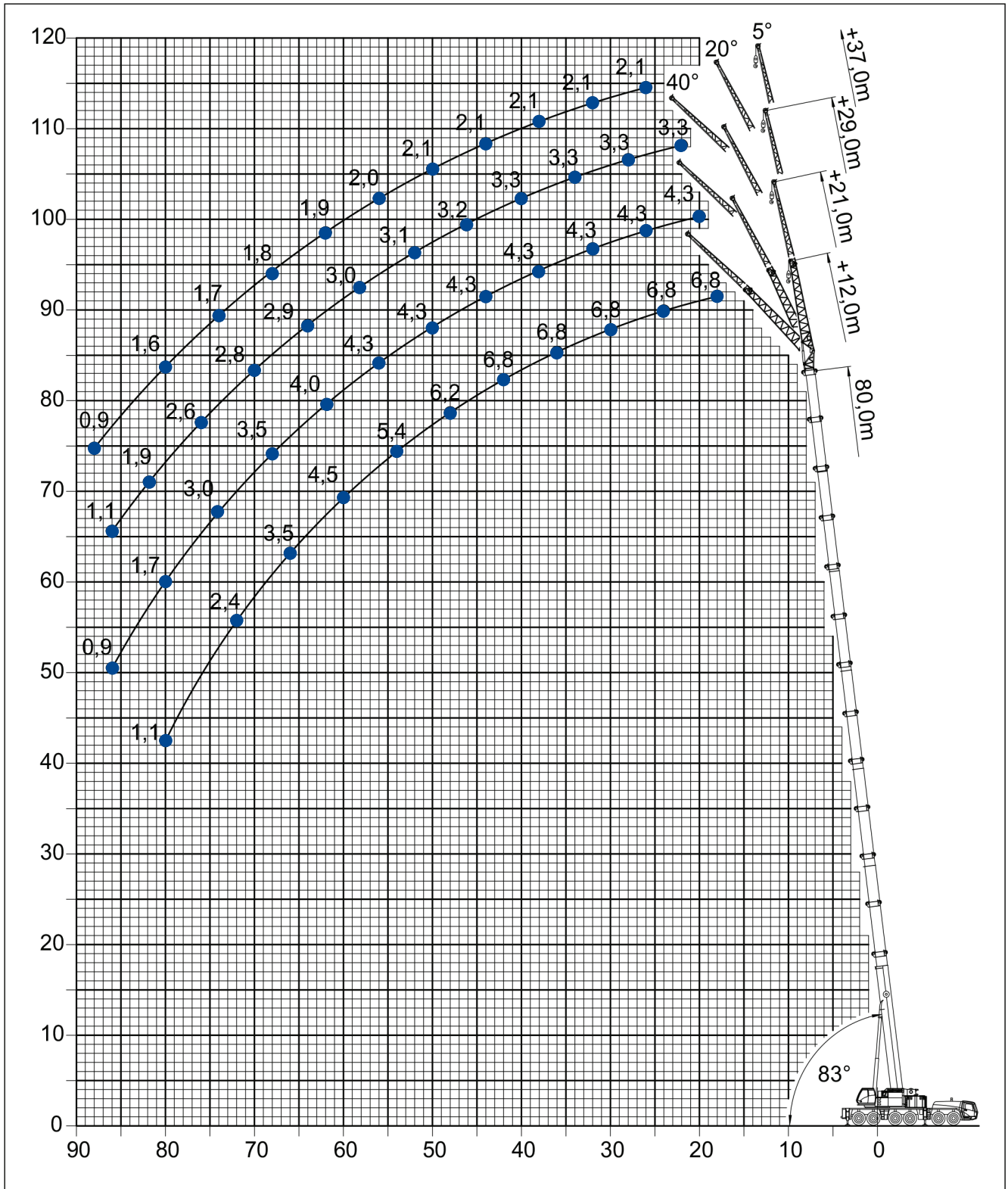
5°-40°-12,0°-21,0°-29,0°-37,0°



8,5 m



360°





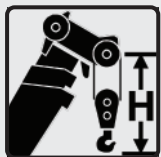
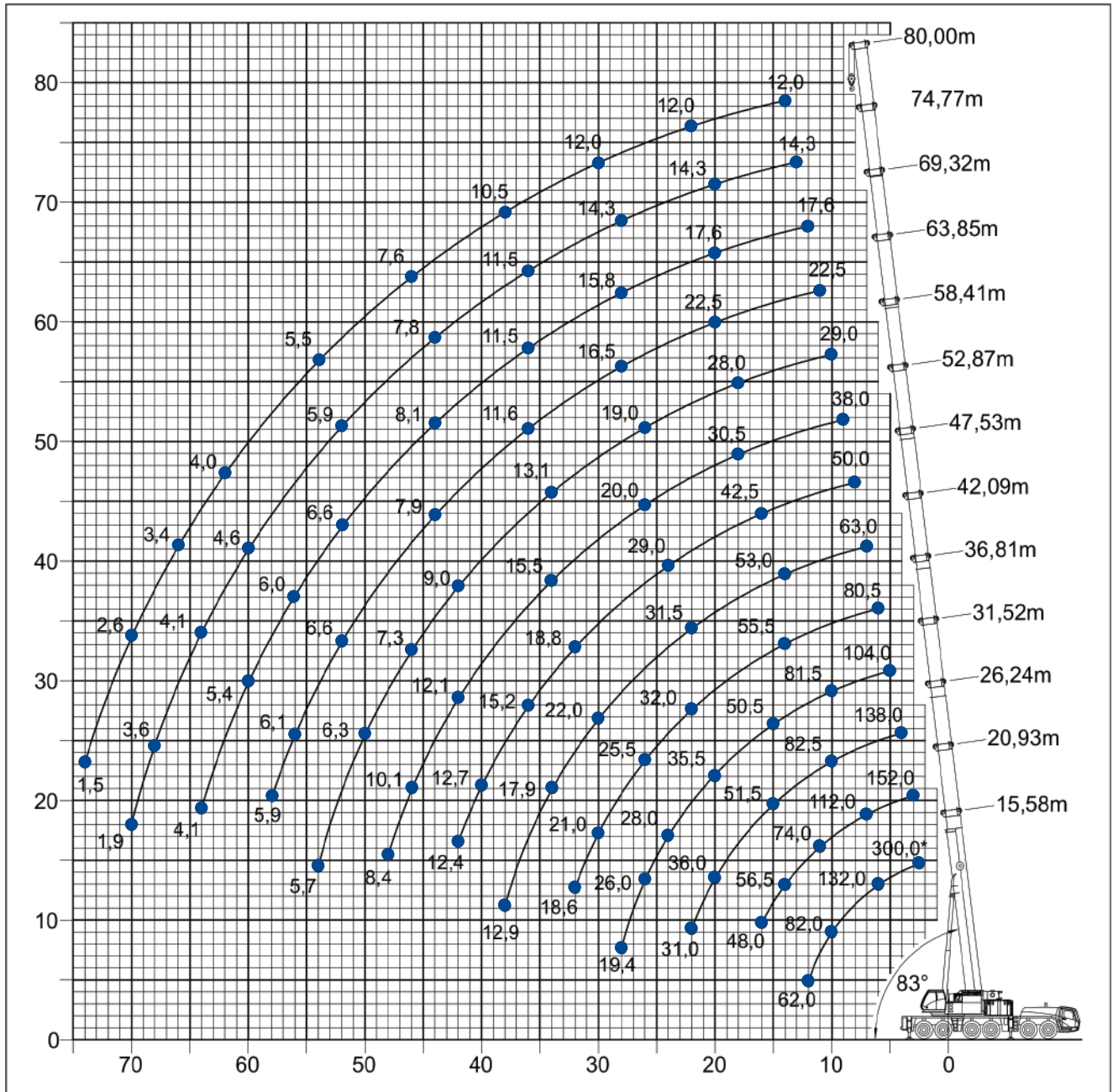
15,6 - 80,0 m



8,5 m



360°



Hook block

H (mm)

200 D	3650
160 D	3650
125 D	3300
80 D	3300
32 E	3200
12 H/B	2450

* Over rear